

To begin using the presentation equipment in this room (300e KL), use the remote for the projector to turn on the screen. If, when the projector warms up, it displays a blue screen, press the HDMI button on the remote to display the WePresent screen



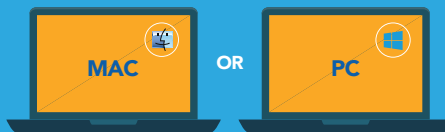
Quick Start Guide



WiPG-2000



CHOOSE YOUR DEVICE



- 1 Connect your mobile device to the Wi-Fi name below

Wi-Fi name **grizznet**

- 2 Download the MirrorOp Presenter app



- 3
 - Open app
 - Choose a display mode (doc, photo, browser, etc.)
 - Click on the play icon at bottom of the screen
 - Enter the IP address from left top of TV screen (ignore the wireless prompts)

- 4
 - Enter 4 digit code from top right top right of TV screen
 - To stop display, click square stop icon at bottom of screen

- 5
 - Select full screen or quadrant

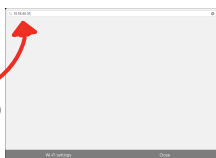


- 1 Connect your computer to the Wi-Fi below

Wi-Fi name **grizznet**

- 2 **DOWNLOAD**

- Open browser
- Type IP address* of the wePresent (found on the TV)
- Click download software*
- Install software



*IP address: 4 numbers separated by periods

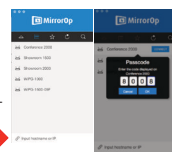
Or...

SCAN QR CODE ON STANDBY SCREEN

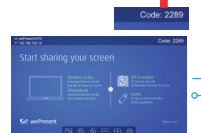
Or go to:
www.wepresentwifi.com/downloads.html

*Mac users: avoid installing the optional "Extended Desktop Driver" for Mac.

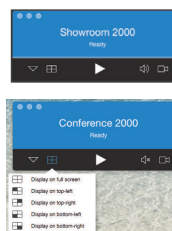
- 3
 - Launch software
 - Input IP address manually (IP address found on TV screen - Ignore 'No receivers found' message).



- 4
 - Enter 4 digit code
 - Press connect



- 5
 - Press 'play' button for full screen
 - Select quadrant icon to display in quad screen



- 1 Connect your ChromeBook to the Wi-Fi below

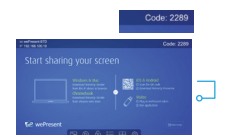
Wi-Fi name **grizznet**

- 2 Download the MirrorOp Sender app in the Web Store

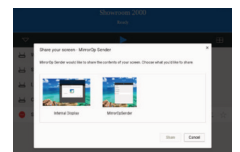


- 3
 - Launch software
 - Connect to wePresent device

- 4
 - Enter 4 digit code
 - Press connect



- 5
 - Select if you want to mirror your entire desktop, or just a single app



- 6
 - Press 'play' button for full screen
 - Select quadrant icon to display in quad screen